



Metodologia **THE World Academic Rankings „od kuchni”**

Waldemar Siwiński

*Prezes Fundacji Edukacyjnej „Perspektywy”
Kierownik „International Visibility Project”*

Warszawa, 28 lutego 2020





VISIBILITY

***Intangible assets
with tangible results***



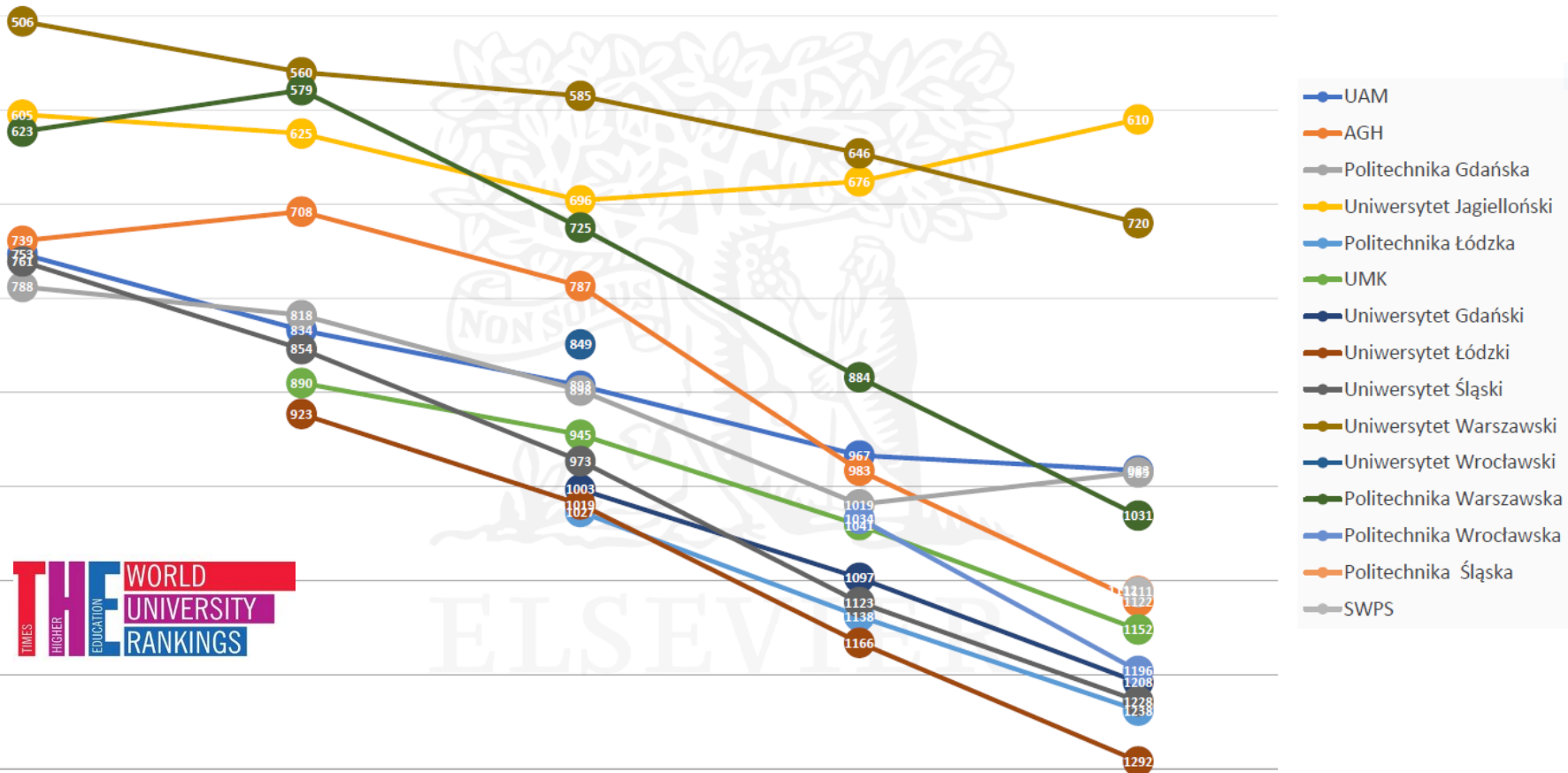
2016

2017

2018

2019

2020



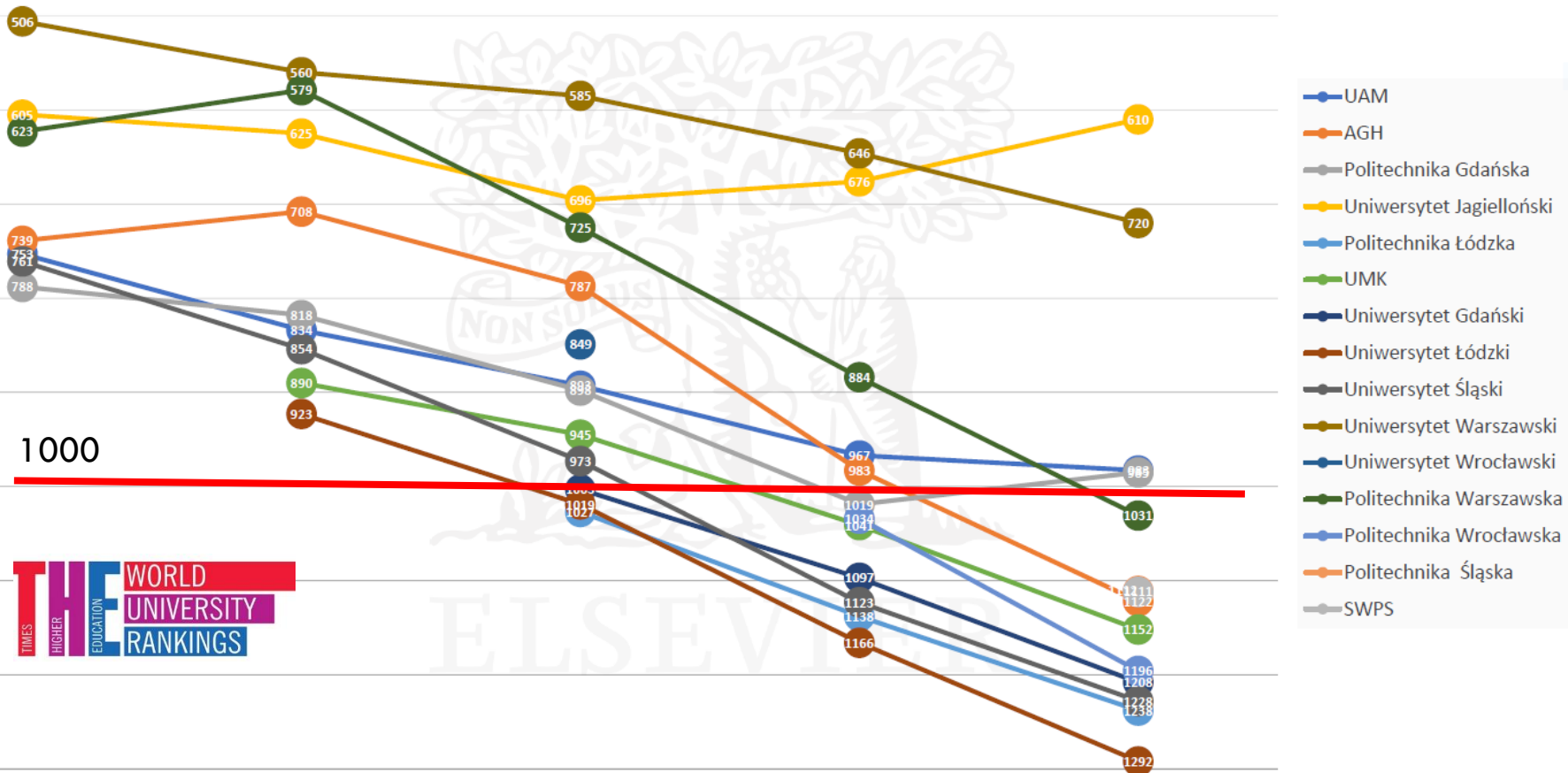
2016

2017

2018

2019

2020



THE World Ranking by Subject 2020

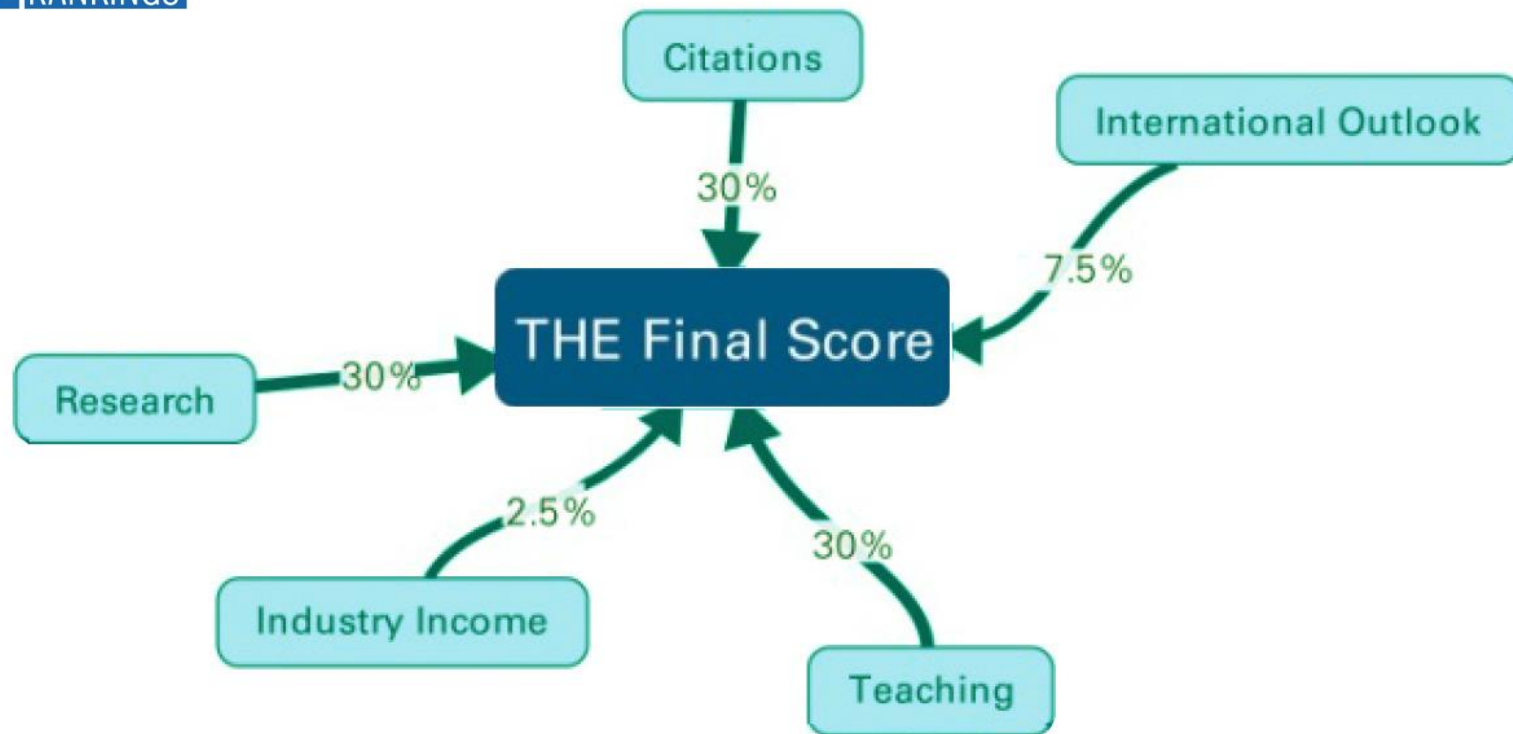
THE Ranking by Subject 2020 (pub. 2 October - 19 November 2019)

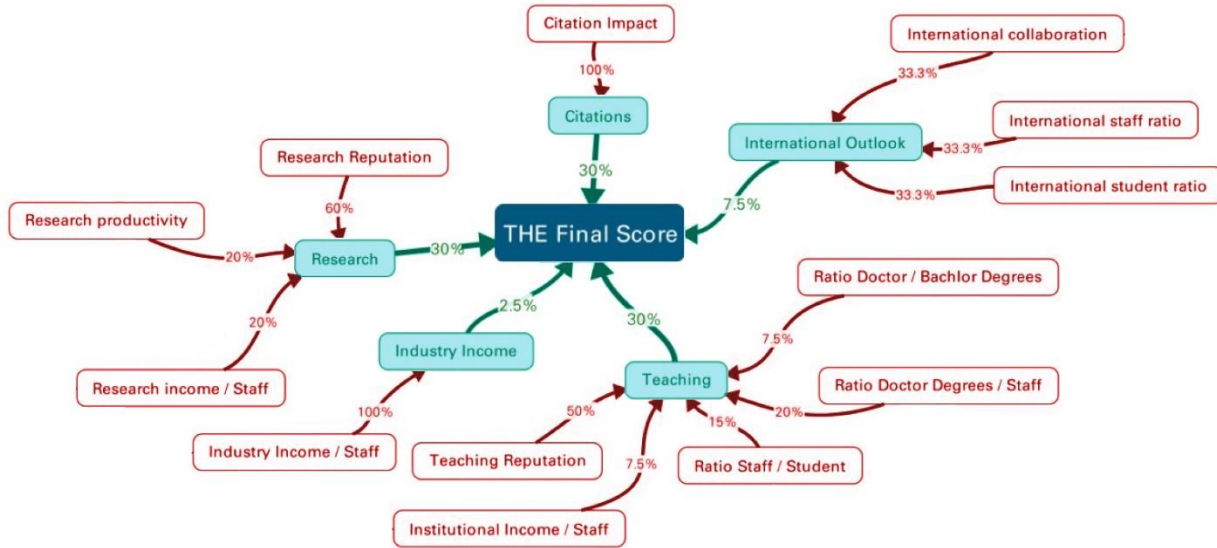
		Arts & humanities	Business & economics	Clinical, pre-clinical & health	Computer science	Education	Engineering & technology	Life sciences	Physical sciences	Psychology	Social sciences
<i>Liczba uczelni w rankingu</i>		536	632	775	749	477	1008	821	1054	494	720
1	Akademia Górniczo-Hutnicza				501-600		801+		601-800		
2	Politechnika Gdańska				601+		601-800		601-800		
3	Politechnika Łódzka		501+		601+		801+	601+	801+		
4	Politechnika Śląska				501-600		601-800				
5	Politechnika Warszawska				501-600		601-800		601-800		
6	Politechnika Wroclawska				601+		801+	601+	801+		
7	Uniwersytet Gdański	401+						601+	801+		601+
8	Uniwersytet im. Adama Mickiewicza	401+				301-400		501-600	601-800		501-600
9	Uniwersytet Jagielloński	301-400		401-500	601+			401-500	501-600	401+	601+
10	Uniwersytet Łódzki	401+	501+					601+	801+		601+
11	Uniwersytet Mikołaja Kopernika	401+		601+				601+	601-800		601+
12	Uniwersytet Śląski w Katowicach	401+				401+		601+	601-800		
13	Uniwersytet Warszawski	251-300	501+		301-400			401-500	301-400	251-300	501-600

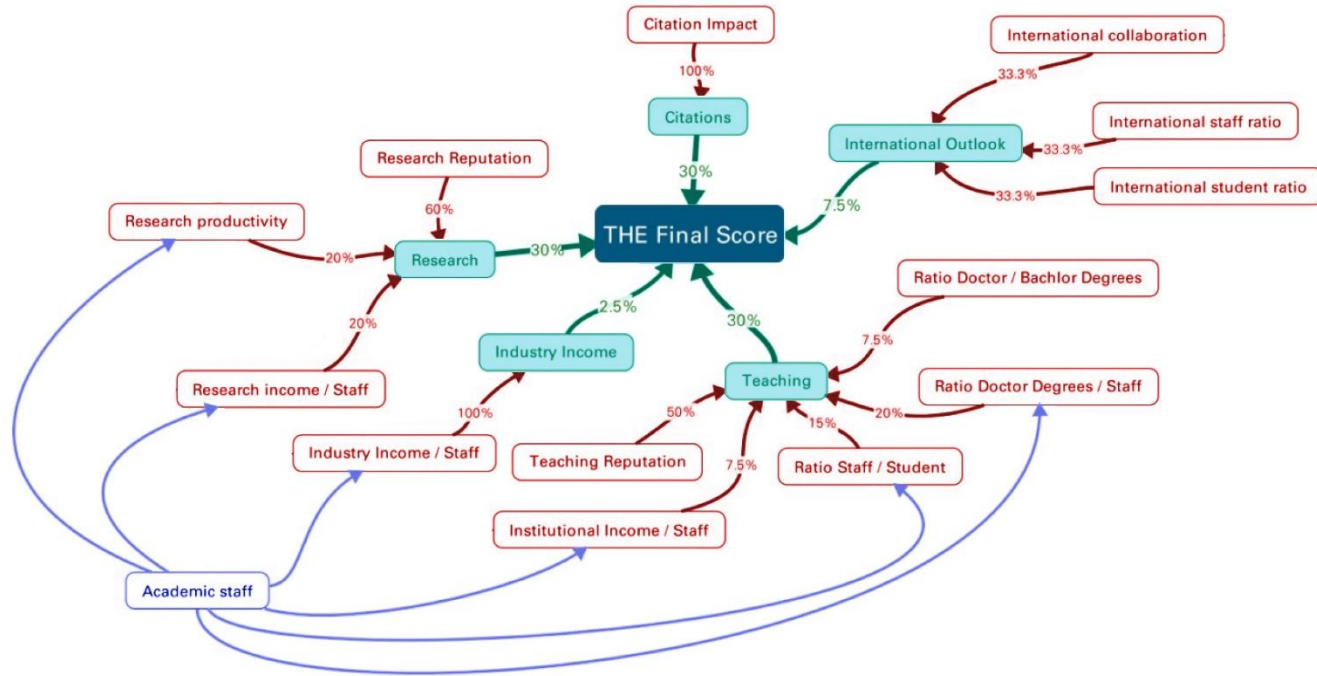
Główne światowe rankingi uniwersytetów

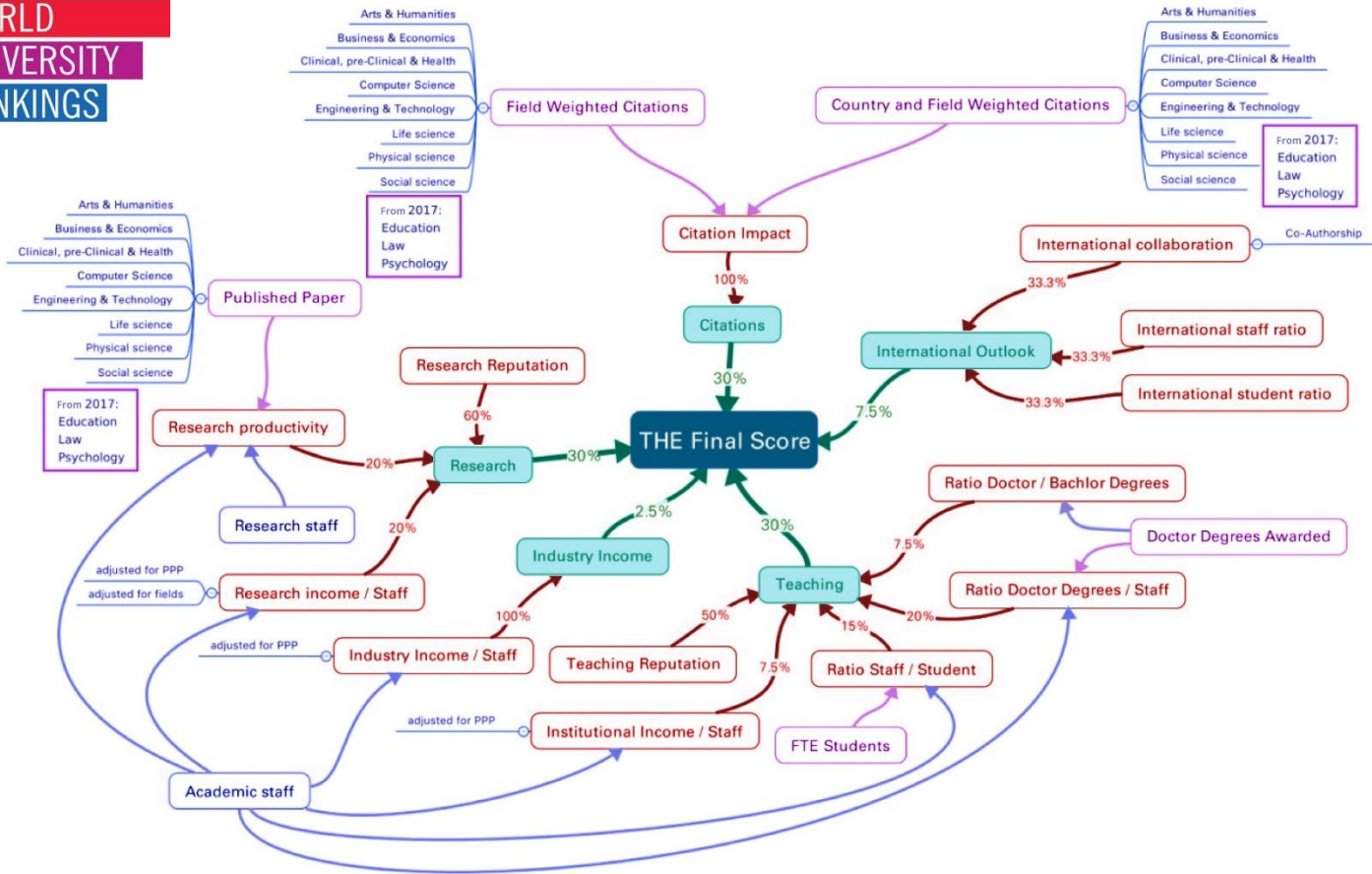
Pełna nazwa rankingu	Nazwa skrócona	2003	04	05	06	07	08	09	10	11	12	13	14	15	16
Academic Ranking of World Universities (or Shanghai Ranking)	ARWU	shanghairanking.com													
Ranking Web of Universities (Webometrics)	Webometrics	webometrics.info													
QS World University Ranking	QS	QS – THE topuniversities.com													
Performance Ranking of Scientific Papers for World Universities (or National Taiwan University Ranking)	Taiwan	nturanking.lis.ntu.edu.tw													
CWTS Leiden Ranking	Leiden	leidenranking.com													
University Ranking by Academic Performance (URAP)	URAP	urapcenter.org													
Times Higher Education World University Rankings (THE Ranking)	THE	timeshighereducation.com													
Round University Rankings (RUR)	RUR	roundranking.com													
U-Multirank	Multirank	u-multirank.eu													
Center for World University Rankings (CWUR)	CWUR	cwur.org													
US News Best Global Universities Rankings	USNGlobal	usnews.com													

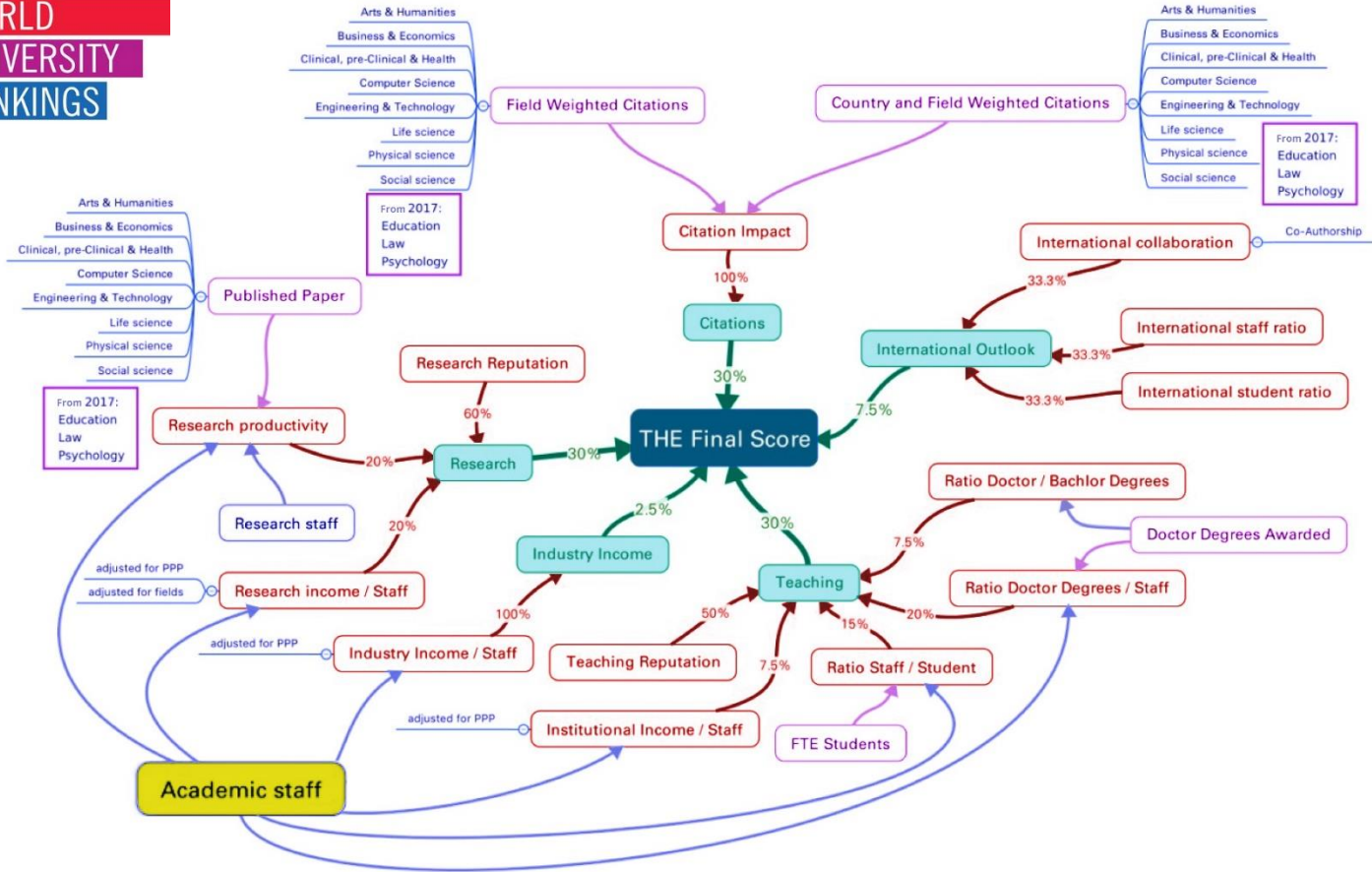
	Times Higher Education	QS	Shanghai ARWU
Teaching environment	Faculty-student ratio 4.5%	Faculty-student ratio 20%	Allumni Nobels 10%
	Institutional income 2.25%		
	Doctorates to academic staff ratio 6%		
	Doctorates to bachelor's ratio 2.25%		
	Reputation Survey 15 %		
Research	Citation impact 30%	Citation per faculty 20%	Faculty Nobels 20%
	Reputation survey 18%	Reputation 40%	Papers in Nature and Science 20%
	Research income 6%		Highly cited researchers 20%
	Research productivity 6%		Papers in Science Citation Index 20%
International Outlook	International students 2.5%	International students 5%	
	International faculty 2.5%	International faculty 5%	
	International research papers 2.5%		
Knowledge transfer	Industry income 2.5%		
Employer reputation		Employer reputation 10%	
Productivity			Per capita performance 10%







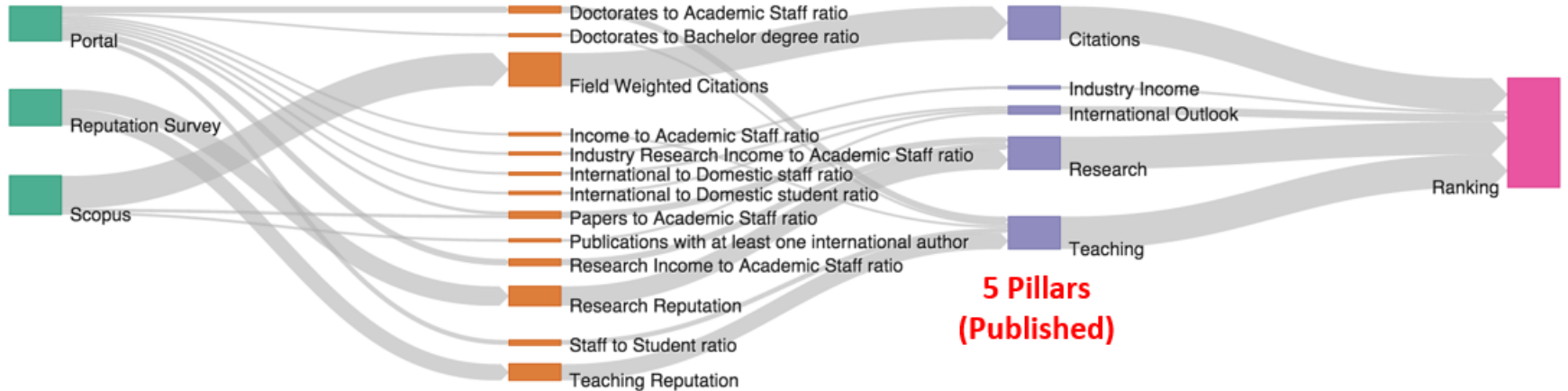




A brief overview of THE methodology

Data Sources

13 Metrics (Not published)

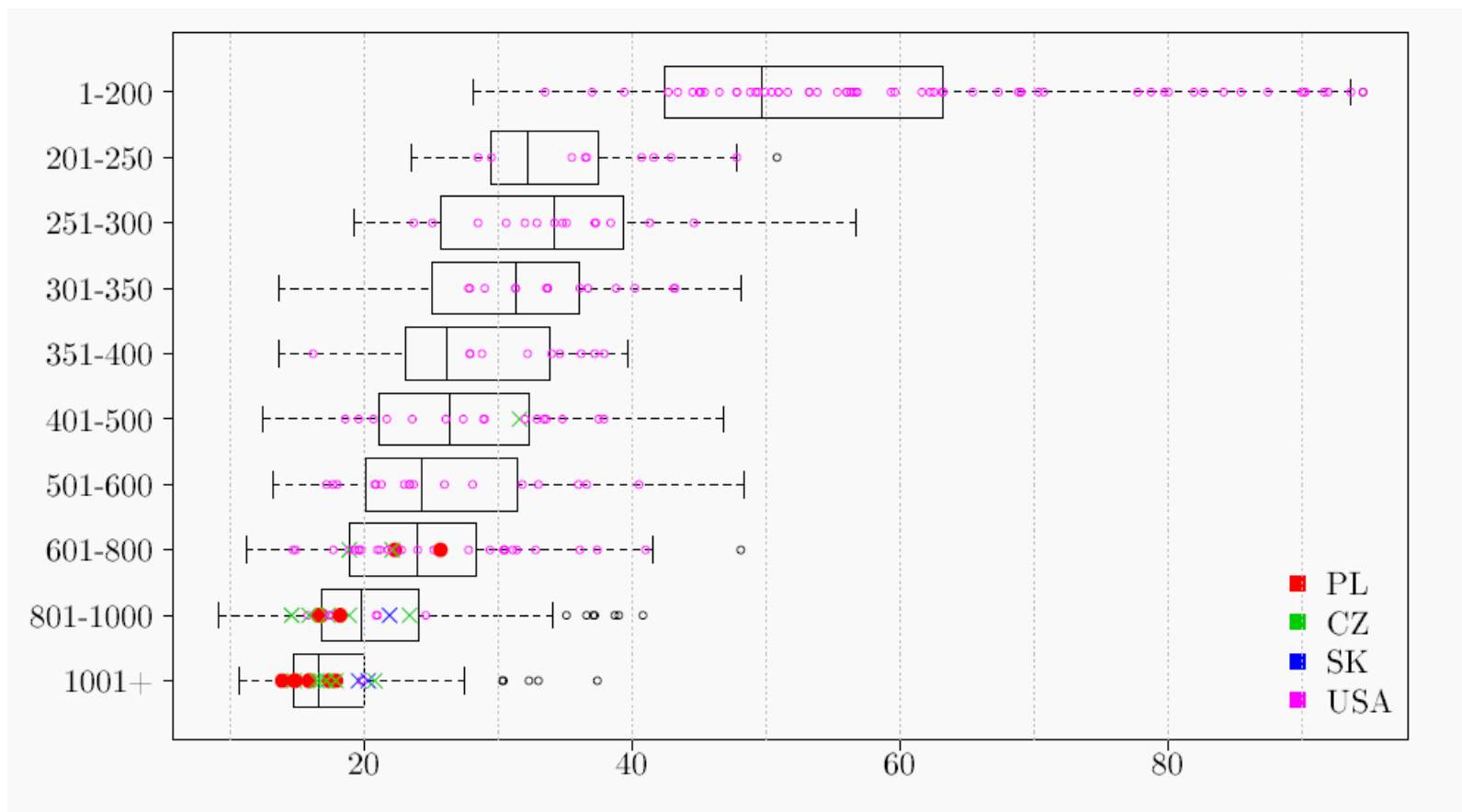


Jak „rozszyfrować” THE ranking?

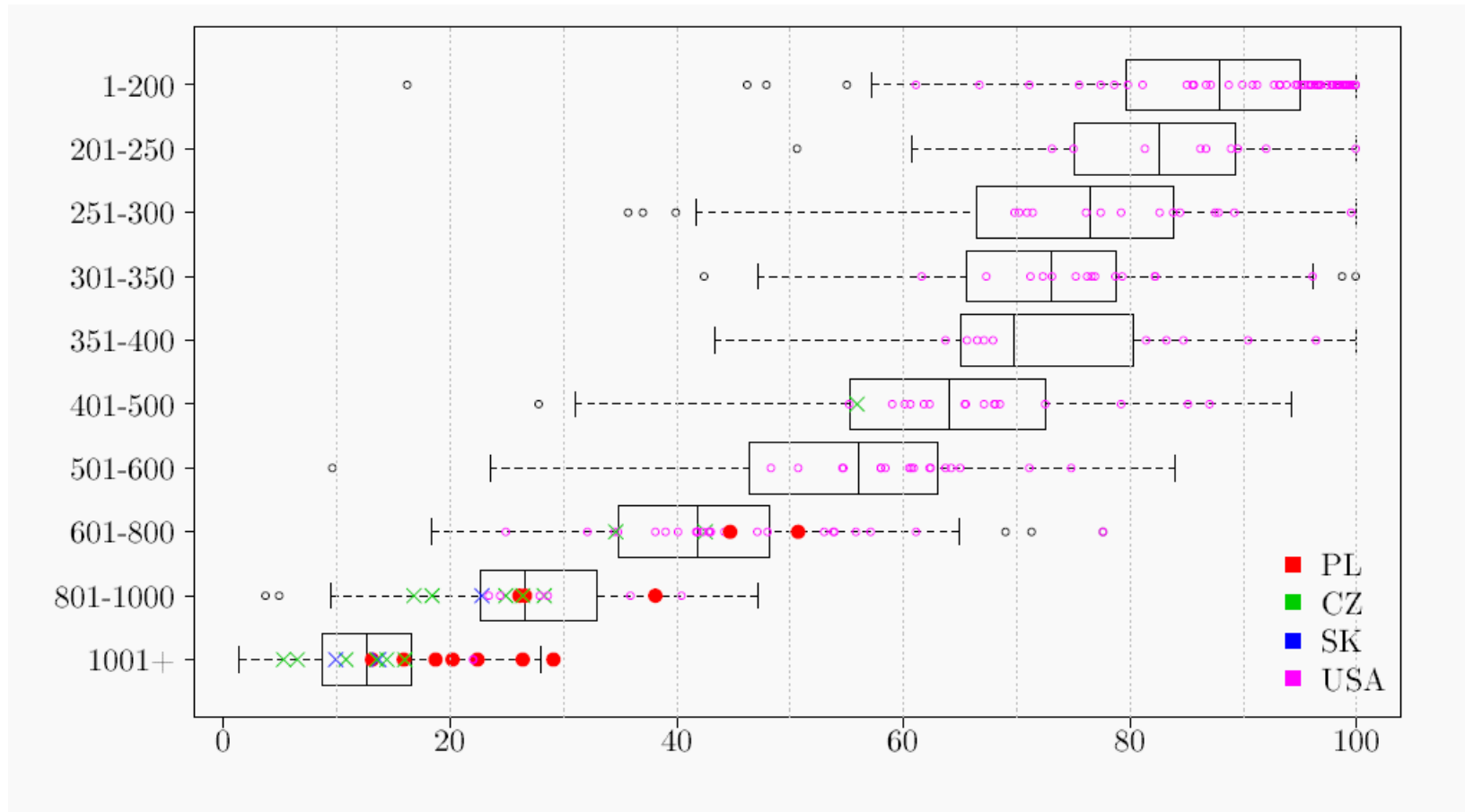
Reverse Engineering – Inżynieria odwrotna

- **Technika odwracania, inżynieria odwrotna, inżynieria wsteczna, programowanie zwrotne** ([ang. reverse engineering](#)) – proces badania produktu (urządzenia, programu komputerowego) w celu ustalenia, jak on dokładnie działa, a także w jaki sposób i jakim kosztem został wykonany. Zazwyczaj prowadzony w celu zdobycia informacji niezbędnych do skonstruowania odpowiednika.
- Używana także przez wojsko w celu kopiowania technologii opracowanych przez inne państwa...

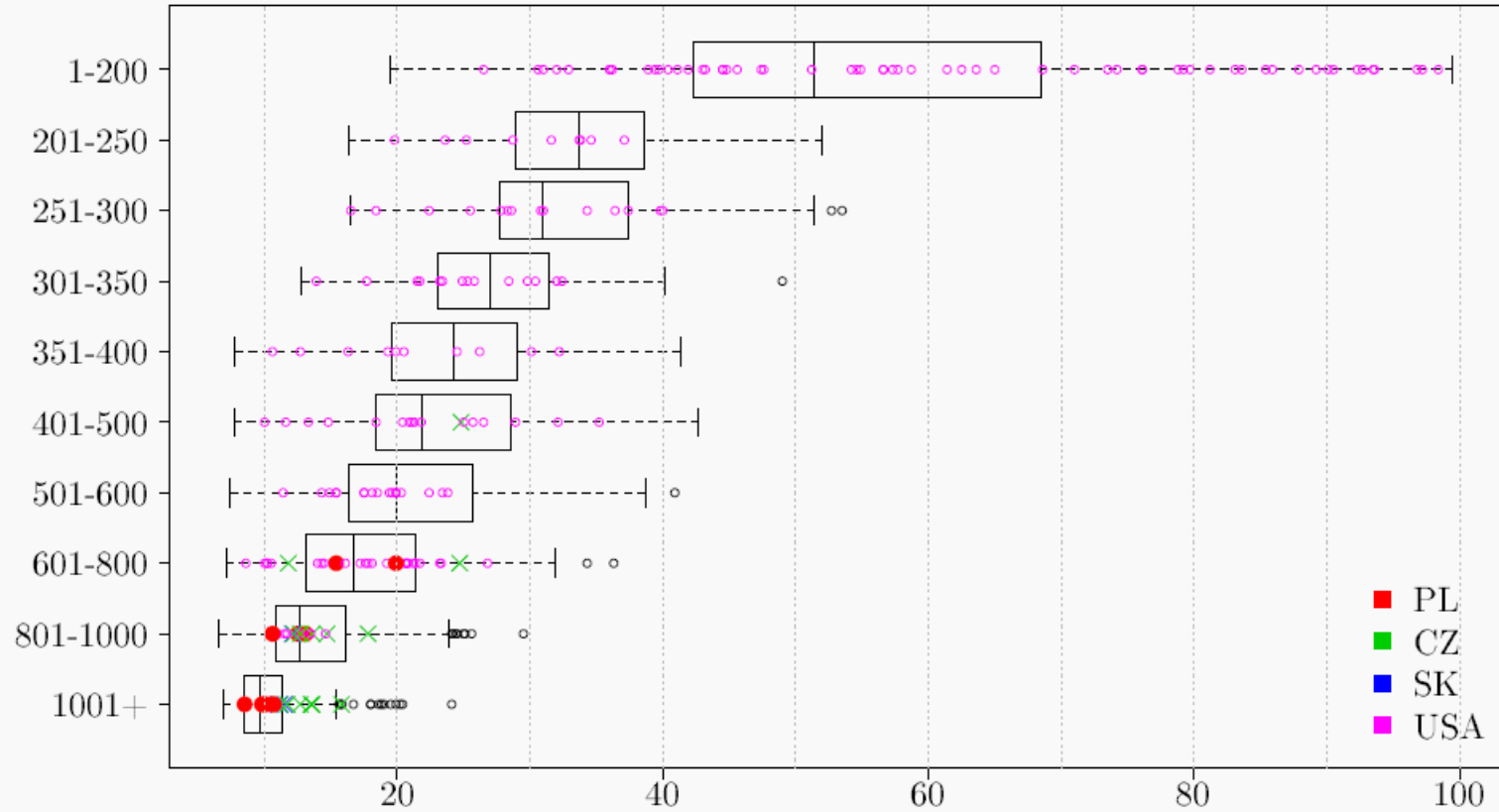
Teaching



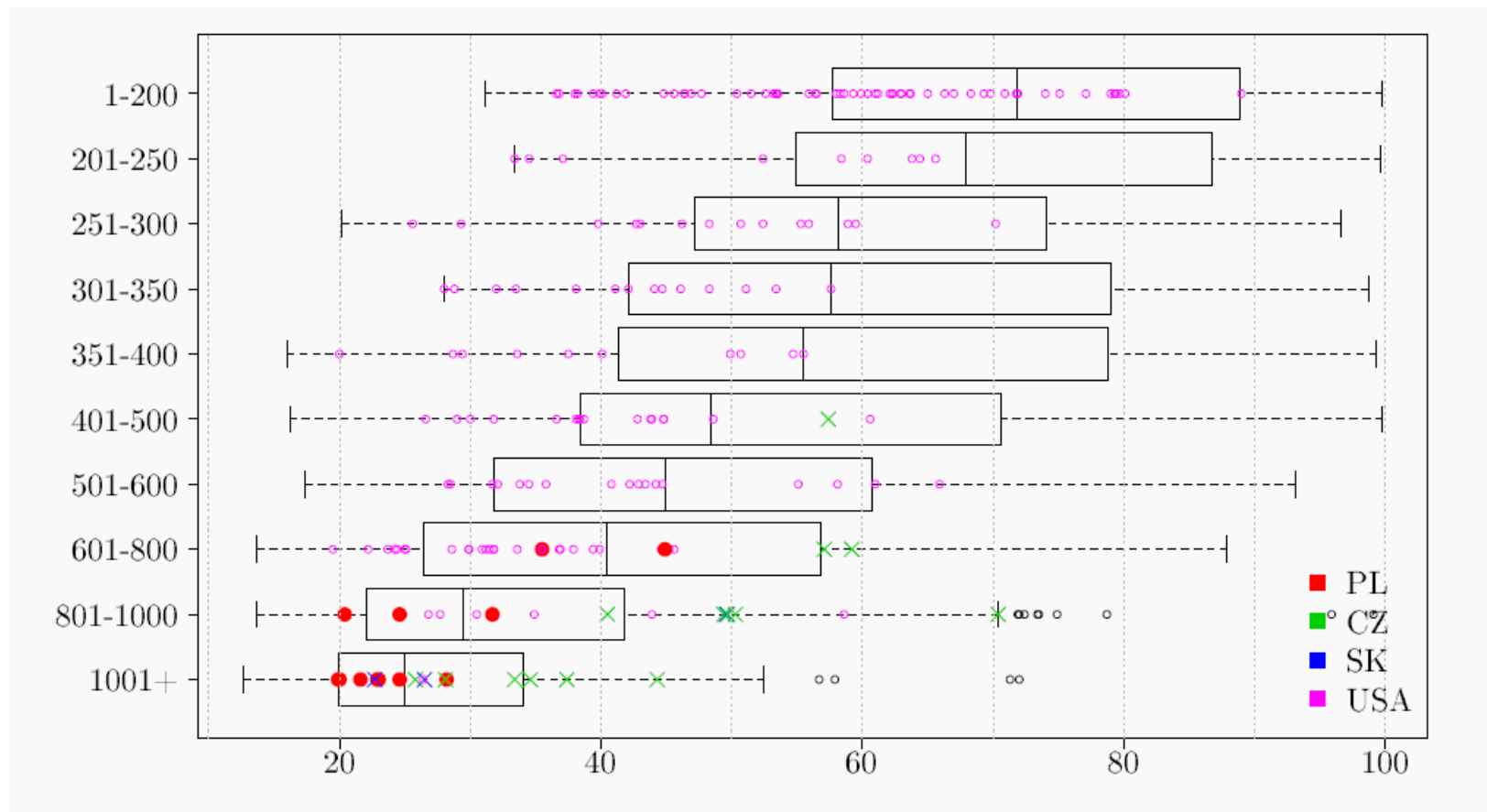
Citations



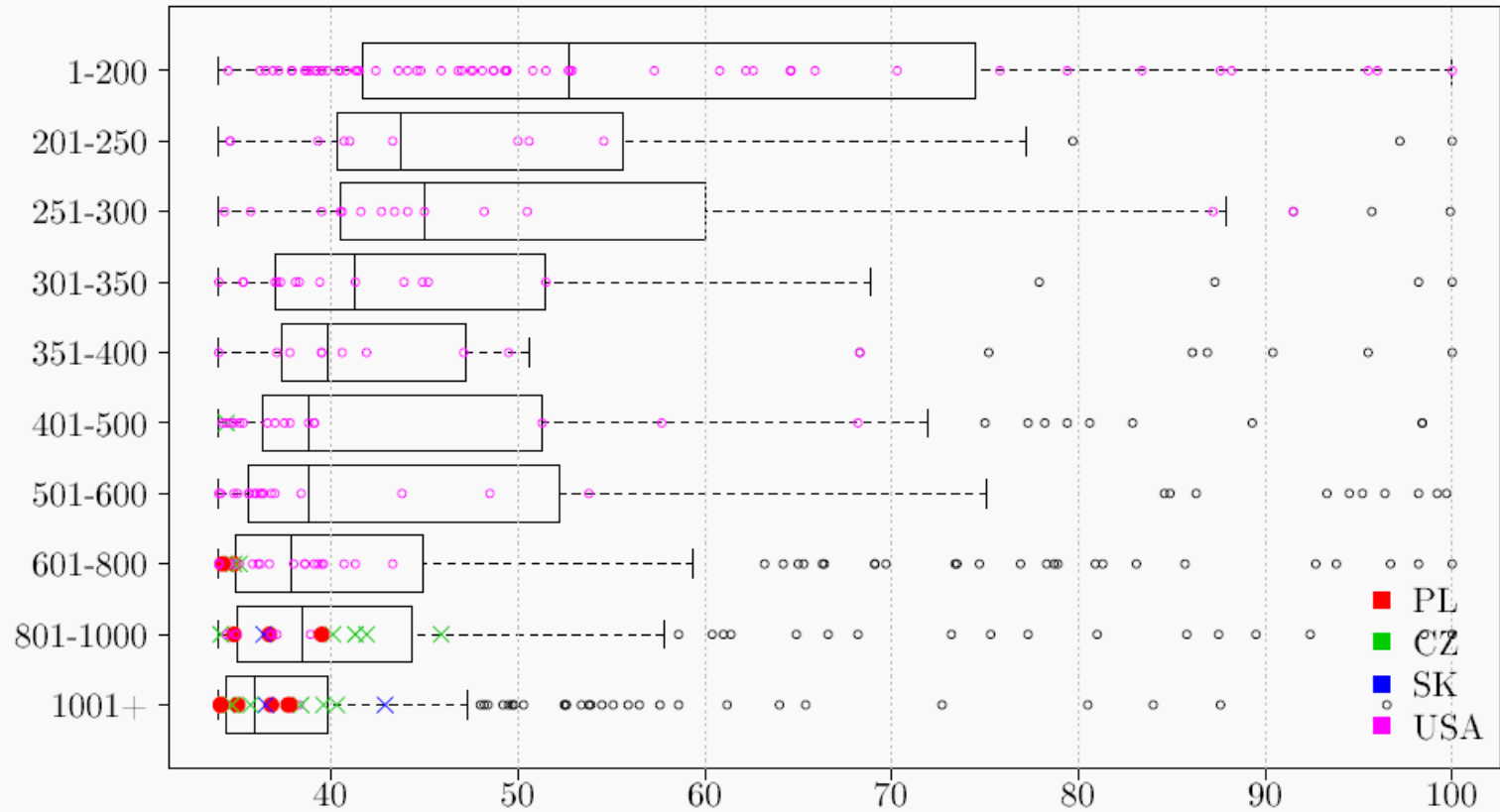
Research



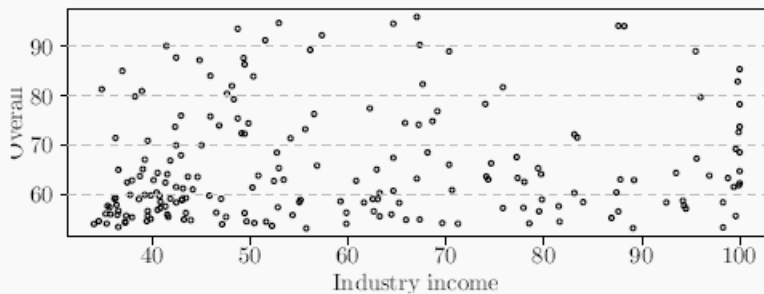
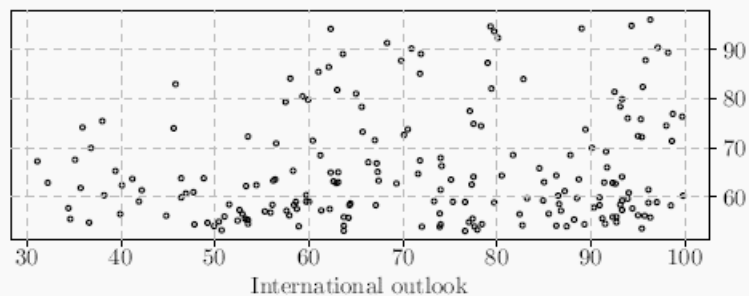
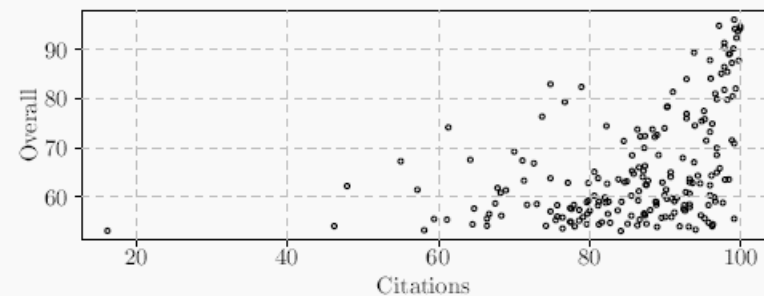
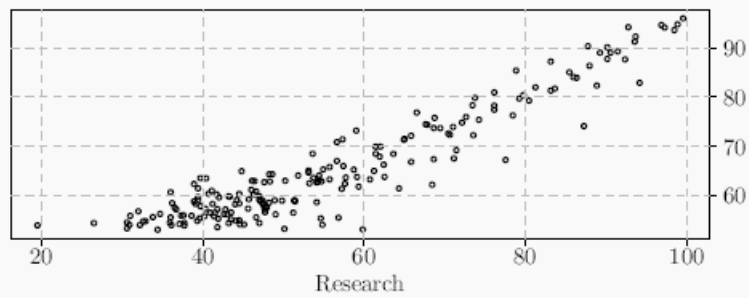
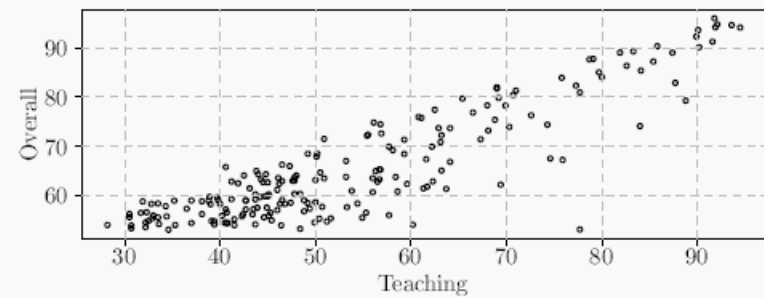
International outlook



Industry income



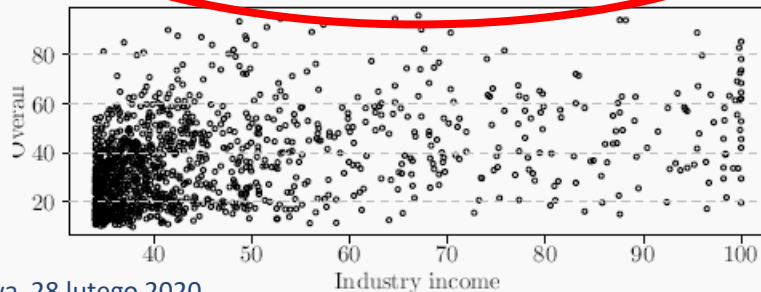
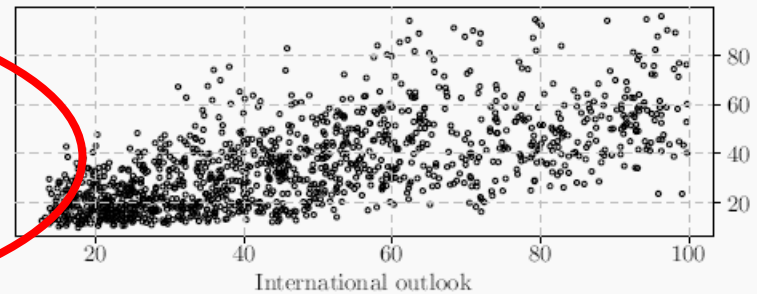
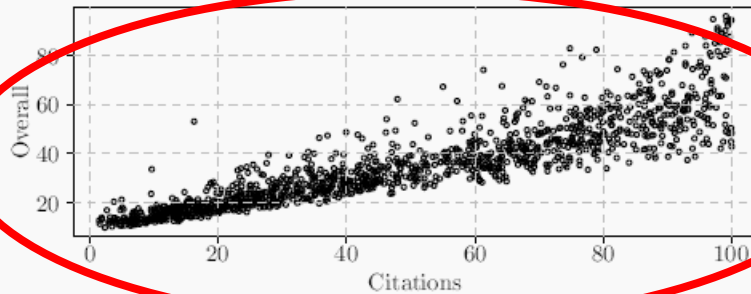
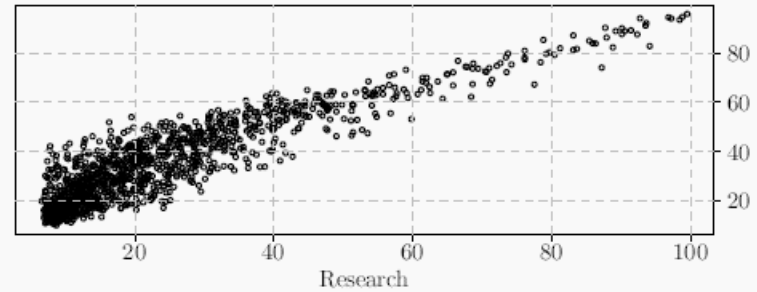
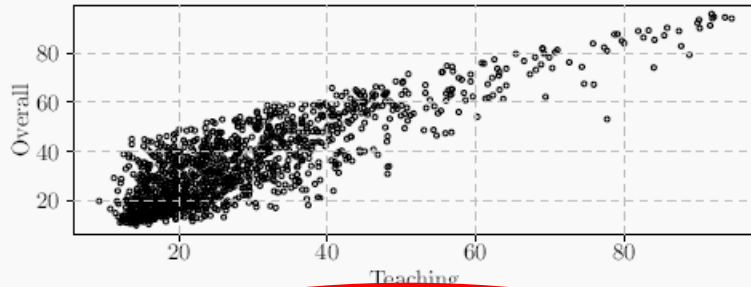
Zależność wyniku od kryteriów składowych



... top 200 uczelni

dla Top-200

Zależność wyniku od kryteriów składowych



... wszystkie uczelnie

dla wszystkich

„Rozszyfrować” THE ranking...

Reverse Engineering – Za mało danych...

- Na obecnym etapie analiz THE Ranking nie jest odtwarzalny na poziomie wskaźników
- Nie mamy bowiem dostępu do danych dotyczących poszczególnych wskaźników
- Przekształcenie danych zakłada znajomość statystyk próbkowych całej populacji
 - Utrudnia to symulację zachowania się rankingu
 - Oraz porównywanie rankingów pomiędzy poszczególnymi latami

THE World University Rankings

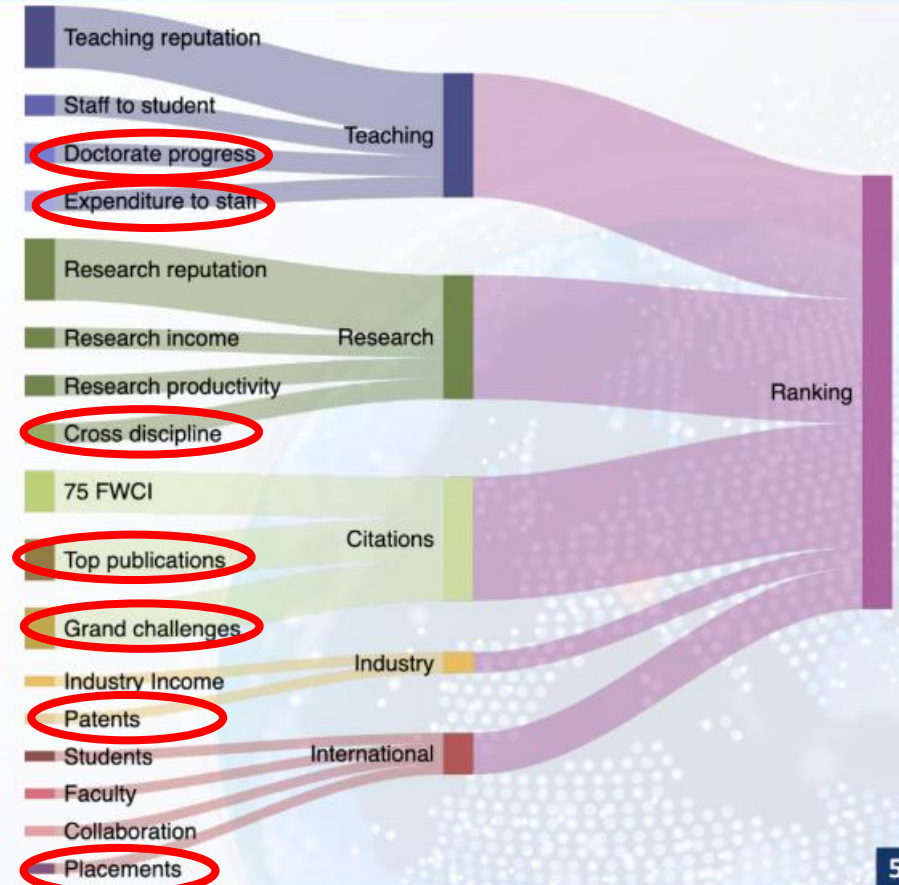
	Doctorates to academic staff	Doctorates to bachelor's degrees awarded	Teaching reputation	Income to academic staff	Staff to student ratio	Papers to academic staff	Research income to academic staff	Research reputation	Field Weighted Citations	Industry research income to academic staff	International to domestic staff	International to domestic student	Publications with international author
%	6	2.25	15	2.25	4.5	6	6	18	30	2.5	2.5	2.5	2.5
Relative	Staff	Student body		Staff	Staff	Staff	Staff		Papers	Staff	Staff	Student body	
Norm	Z	Z	Exp	Z	Z	Z	Z	Exp	Z	Z	Z	Z	Z
Subject weight	Yes					Yes	Yes		Yes*				Yes
PPP				Yes			Yes			Yes			




Wyzwanie dodatkowe:

Zapowiedziane zmiany w metodologii THE Rankings...

Zmiany w metodologii



A decorative blue background on the left side of the slide, featuring a molecular structure with glass spheres and rods. Various white icons are scattered around, including a right-angled triangle, a beaker, a 3D cube with vertices labeled A, B, C, and D, a DNA double helix, a satellite dish, a gear inside a head, and an atom symbol.

*A ship in harbour is safe,
but that is not
what ships are built for*

Grace Hopper
a pioneering computer scientist
and U.S. Navy Admiral



Dziękuję za uwagę

w.siwinski@perspektywy.pl

www.IntVP.edu.pl

